

modifications of the cover

manhole and the 2 nozzles will be kept
no modifications

ground product feed
from UPZ-mill

hole with D560 mm has to be cut
into the cover for aspiration dome
nozzle and aspiration dome
will be supplied by HAAG

hole with D218 mm has to be cut
into the cover for discharge duct
from the filter
nozzle and duct will be supplied by HAAG

if not already existing:
nozzles for on-site O2-measurement and Pt100
have to welding into the cover as well

existing cover of the mixer

Index	Datum / Date	Änderer / Modifier	Änderungstext 1 / Änderungstext 2	modification text 1 / modification text 2
Allgemeintoleranzen/General tolerances: DIN ISO 2768 mK Tolerierung/Tolerance: DIN ISO 8015 Verstärkungen/Workpiece edges: DIN ISO 13715 Oberflächenangaben/Surface details: WN 0-8301 (EN ISO 1302)				
Schweiß-/Allgemeintoleranzen/General welding tolerances: DIN EN ISO 13920 Längenmaße/Length dimensions: B; Winkelmaße/Angle dimensions: A; Form u. Lage/Geometric Dimensioning and Tolerancing: F				
Erstellt Designed	17.12.2025	Sieger	Nauta Mixer HV3000 Adaption of the cover	
Geprüft Checked		Haider S.		
AV-Geprüft Checked				
			X000013943	SK /01
Revision / Version: 01/01			Gewicht weight	kg

modifications of the cover

manhole and the 2 nozzles will be kept
no modifications

ground product feed
from UPZ-mill

hole with D560 mm has to be cut
into the cover for aspiration dome
nozzle and aspiration dome
will be supplied by HAAG

hole with D218 mm has to be cut
into the cover for discharge duct
from the filter
nozzle and duct will be supplied by HAAG

if not already existing:
nozzles for on-site O2-measurement and Pt100
have to welding into the cover as well

existing cover of the mixer

Index	Datum / Date	Änderer / Modifier	Änderungstext 1 / Änderungstext 2	modification text 1 / modification text 2
Allgemeintoleranzen/General tolerances: DIN ISO 2768 mK Tolerierung/Tolerance: DIN ISO 8015 Verstärkungen/Workpiece edges: DIN ISO 13715 Oberflächenangaben/Surface details: WN 0-8301 (EN ISO 1302)				
Schweiß-Allgemeintoleranzen/General welding tolerances: DIN EN ISO 13920 Längennetze/Length dimensions: B Winkelmaße/Angle dimensions: A Form u. Lage/Geometric Dimensioning and Tolerancing: F				
Erstellt Designed	Datum / Date 17.12.2025	Name / Name Sieger	Nauta Mixer HV3000 Adaption of the cover	
Geprüft Checked		Haider S.		
AV-Geprüft Checked				
HOSOKAWA ALPINE			X000013943	SK /01
Revision / Version: 01/01			Gewicht weight	kg

Entstanden aus created from
Ersatz für replacement for

Schutzvermerk ISO 16016 beachten / For this drawing we reserve all rights according to ISO 16016 / ©HOSOKAWA ALPINE AG
Maßstab Scale 1:15
CAD: AUTOCAD-2018

Blatt Sheet of
1

Format Size
A2

modifications of the cover

manhole and the 2 nozzles will be kept
no modifications


ground product feed
from UPZ-mill

hole with D560 mm has to be cut
into the cover for aspiration dome
nozzle and aspiration dome
will be supplied by HAAG

hole with D218 mm has to be cut
into the cover for discharge duct
from the filter
nozzle and duct will be supplied by HAAG

if not already existing:
nozzles for on-site O2-measurement and Pt100
have to welding into the cover as well

existing cover of the mixer

Index	Datum / Date	Änderer / Modifier	Änderungstext 1 / Änderungstext 2	modification text 1 / modification text 2
Allgemeintoleranzen/General tolerances: DIN ISO 2768 mK Tolerierung/Tolerance: DIN ISO 8015 Verstärkungen/Workpiece edges: DIN ISO 13715 Oberflächenangaben/Surface details: WN 0-8301 (EN ISO 1302)				
Schweiß-Allgemeintoleranzen/General welding tolerances: DIN EN ISO 13920 Längennetze/Length dimensions: B Winkelmaße/Angle dimensions: A Form u. Lage/Geometric Dimensioning and Tolerancing: F				
Erstellt Designed	17.12.2025	Sieger	Nauta Mixer HV3000 Adaption of the cover	
Geprüft Checked		Haider S.		
AV-Geprüft Checked				
 HOSOKAWA ALPINE			X000013943	SK /01
Revision / Version: 01/01			Gewicht weight	kg
			Blatt Sheet	1
			Blattzahl of	1
			Format Size	A2

modifications of the cover

manhole and the 2 nozzles will be kept
no modifications

ground product feed
from UPZ-mill

hole with D560 mm has to be cut
into the cover for aspiration dome
nozzle and aspiration dome
will be supplied by HAAG

hole with D218 mm has to be cut
into the cover for discharge duct
from the filter
nozzle and duct will be supplied by HAAG

if not already existing:
nozzles for on-site O2-measurement and Pt100
have to welding into the cover as well

existing cover of the mixer

Index	Datum / Date	Änderer / Modifier	Änderungstext 1 / Änderungstext 2	modification text 1 / modification text 2
Allgemeintoleranzen/General tolerances: DIN ISO 2768 mK Tolerierung/Tolerance: DIN ISO 8015 Verstärkungen/Workpiece edges: DIN ISO 13715 Oberflächenangaben/Surface details: WN 0-8301 (EN ISO 1302)				
Schweiß-/Allgemeintoleranzen/General welding tolerances: DIN EN ISO 13920 Längenmaße/Length dimensions: B; Winkelmaße/Angle dimensions: A; Form u. Lage/Geometric Dimensioning and Tolerancing: F				
Erstellt Designed	17.12.2025	Name / Name Sieger		Schutzvermerk ISO 16016 beachten / For this drawing we reserve all rights according to ISO 16016 / ©HOSOKAWA ALPINE AG
Geprüft Checked		Haider S.		
AV-Geprüft Checked				
				Maßstab Scale 1:15
Revision / Version: 01/01				Gewicht weight kg
X000013943				SK /01
Revision / Version: 01/01				Format Size A2

modifications of the cover

manhole and the 2 nozzles will be kept
no modifications

ground product feed
from UPZ-mill

hole with D560 mm has to be cut
into the cover for aspiration dome
nozzle and aspiration dome
will be supplied by HAAG

hole with D218 mm has to be cut
into the cover for discharge duct
from the filter
nozzle and duct will be supplied by HAAG

if not already existing:
nozzles for on-site O2-measurement and Pt100
have to welding into the cover as well

existing cover of the mixer

Index	Datum / Date	Änderer / Modifier	Änderungstext 1 / Änderungstext 2	modification text 1 / modification text 2
Allgemeintoleranzen/General tolerances: DIN ISO 2768 mK Tolerierung/Tolerance: DIN ISO 8015 Verstärkungen/Workpiece edges: DIN ISO 13715 Oberflächenangaben/Surface details: WN 0-8301 (EN ISO 1302)				
Schweiß-/Allgemeintoleranzen/General welding tolerances: DIN EN ISO 13920 Längenmaße/Length dimensions: B; Winkelmaße/Angle dimensions: A; Form u. Lage/Geometric Dimensioning and Tolerancing: F				
Erstellt Designed	17.12.2025	Name / Name Sieger		Schutzvermerk ISO 16016 beachten / For this drawing we reserve all rights according to ISO 16016 / ©HOSOKAWA ALPINE AG
Geprüft Checked		Haider S.		
AV-Geprüft Checked				
				Maßstab Scale 1:15
Revision / Version: 01/01				Gewicht weight kg
X000013943				SK /01
Revision / Version: 01/01				Format Size A2

modifications of the cover

manhole and the 2 nozzles will be kept
no modifications

ground product feed
from UPZ-mill

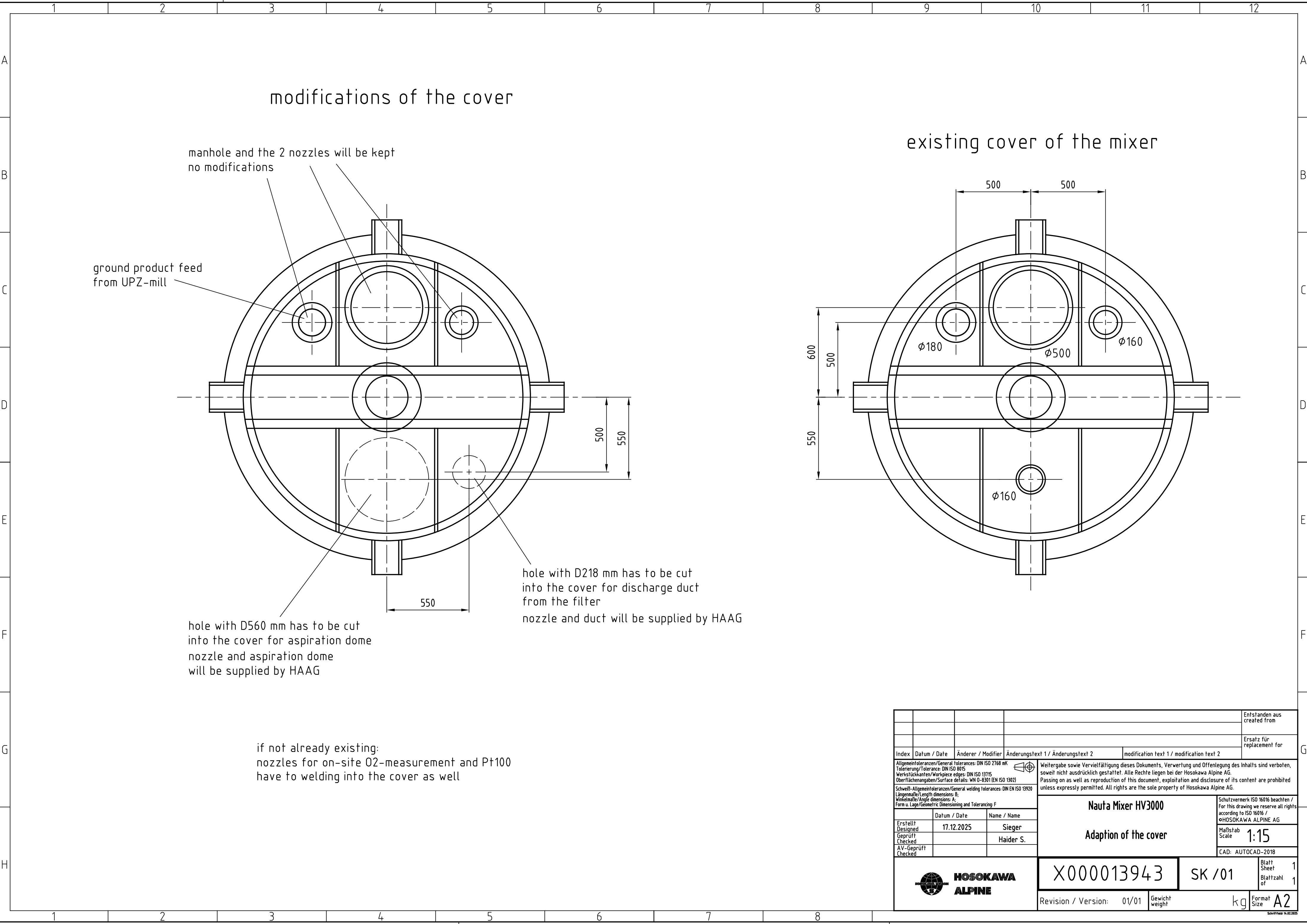
hole with D560 mm has to be cut
into the cover for aspiration dome
nozzle and aspiration dome
will be supplied by HAAG

hole with D218 mm has to be cut
into the cover for discharge duct
from the filter
nozzle and duct will be supplied by HAAG

if not already existing:
nozzles for on-site O2-measurement and Pt100
have to welding into the cover as well

existing cover of the mixer

Index	Datum / Date	Änderer / Modifier	Änderungstext 1 / Änderungstext 2	modification text 1 / modification text 2
Allgemeintoleranzen/General tolerances: DIN ISO 2768 mK Tolerierung/Tolerance: DIN ISO 8015 Verstärkungen/Workpiece edges: DIN ISO 13715 Oberflächenangaben/Surface details: WN 0-8301 (EN ISO 1302)				
Schweiß-/Allgemeintoleranzen/General welding tolerances: DIN EN ISO 15920 Längennähte/Length dimensions: B Winkelmaße/Angle dimensions: A Form u. Lage/Geometric Dimensioning and Tolerancing: F				
Erstellt Designed	Datum / Date 17.12.2025	Name / Name Sieger	Nauta Mixer HV3000 Adaption of the cover	
Geprüft Checked		Haider S.		
AV-Geprüft Checked				
HOSOKAWA ALPINE			X000013943	SK /01
Revision / Version: 01/01			Gewicht weight	kg



modifications of the cover

manhole and the 2 nozzles will be kept
no modifications

ground product feed
from UPZ-mill

500 550

550

hole with D218 mm has to be cut
into the cover for discharge duct
from the filter
nozzle and duct will be supplied by HAAG

hole with D560 mm has to be cut
into the cover for aspiration dome
nozzle and aspiration dome
will be supplied by HAAG

if not already existing:
nozzles for on-site O₂-measurement and Pt100
have to welding into the cover as well



existing cover of the mixer

500 500

600 500 550

Ø180 Ø500 Ø160

Ø160

					Entstanden aus created from
					Ersatz für replacement for
Index	Datum / Date	Änderer / Modifier	Änderungstext 1 / Änderungstext 2	modification text 1 / modification text 2	
Allgemeintoleranzen/General tolerances: DIN ISO 2768 mK Tolerierung/Tolerance: DIN ISO 8015 Verstückanten/Workpiece edges: DIN ISO 13715 Oberflächenangaben/Surface details: WN 0-8301 (EN ISO 1302)			Weitergabe sowie Vervielfältigung dieses Dokuments, Verwertung und Offenlegung des Inhalts sind verboten, soweit nicht ausdrücklich gestattet. Alle Rechte liegen bei der Hosokawa Alpine AG. Passing on as well as reproduction of this document, exploitation and disclosure of its content are prohibited unless expressly permitted. All rights are the sole property of Hosokawa Alpine AG.		Schutzvermerk ISO 16016 beachten / For this drawing we reserve all rights according to ISO 16016 / ©HOSOKAWA ALPINE AG
Schweiß-/Allgemeintoleranzen/General welding tolerances: DIN EN ISO 13920 Längenmaße/Length dimensions: B; Winkelmaße/Angle dimensions: A; Form u. Lage/Geometric Dimensioning and Tolerancing: F					
	Datum / Date	Name / Name			Maßstab Scale
Erstellt Designed	17.12.2025	Sieger			1:15
Geprüft Checked		Haider S.			
AV-Geprüft Checked					CAD: AUTOCAD-2018
 HOSOKAWA ALPINE			X000013943	SK /01	Blatt Sheet of 1
Revision / Version: 01/01			Gewicht weight	kg	Format Size A2